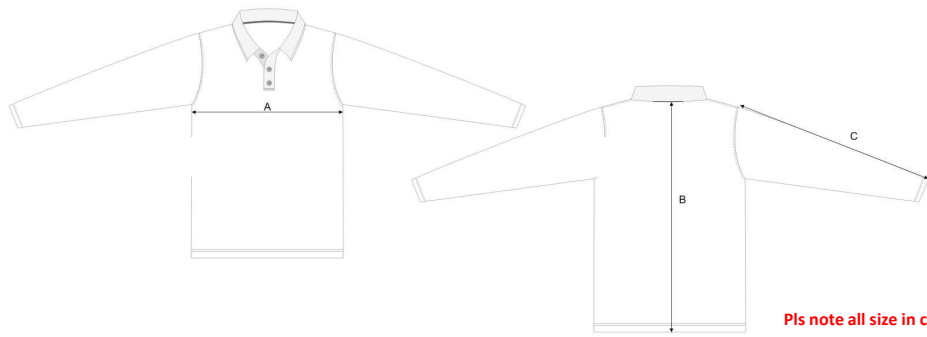


## Kids Polo and Tee Shirt



<b>POINT OF MEASUREMENT</b>		<b>4</b>	<b>6</b>	<b>8</b>	<b>10</b>	<b>12</b>	<b>14</b>						
<b>A</b>	<b>Chest Width</b> <i>(armpit to armpit)</i>				35	37.5	40	42	44.5	47			
<b>B</b>	<b>Body Length</b> <i>(center back to bottom)</i>				48	51	53.5	56.5	59.5	60.5			
<b>C</b>	<b>Short Sleeve Length</b> <i>(Shoulder seam to sleeve opening)</i>				22	23	23.5	24	25	25.5			
<b>C</b>	<b>long Sleeve Length</b> <i>(Shoulder seam to sleeve opening)</i>				33	37	41.5	47	50	54			